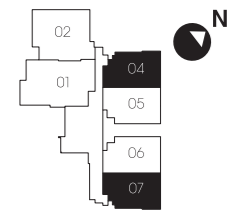
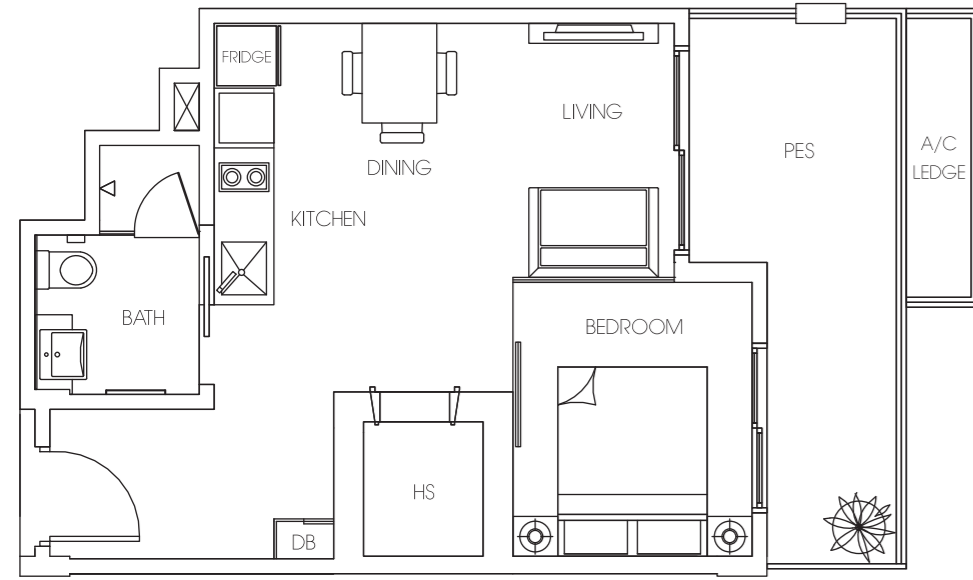


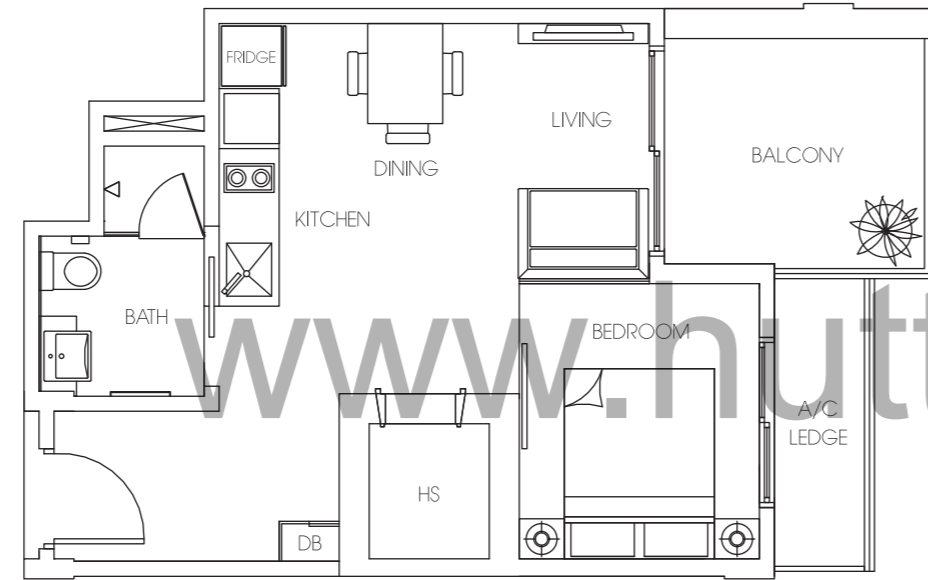
**1 - BEDROOM  
TYPE 1BR-A1 (GFU)**

UNIT #01-04, #01-07\*  
AREA 48 sqm



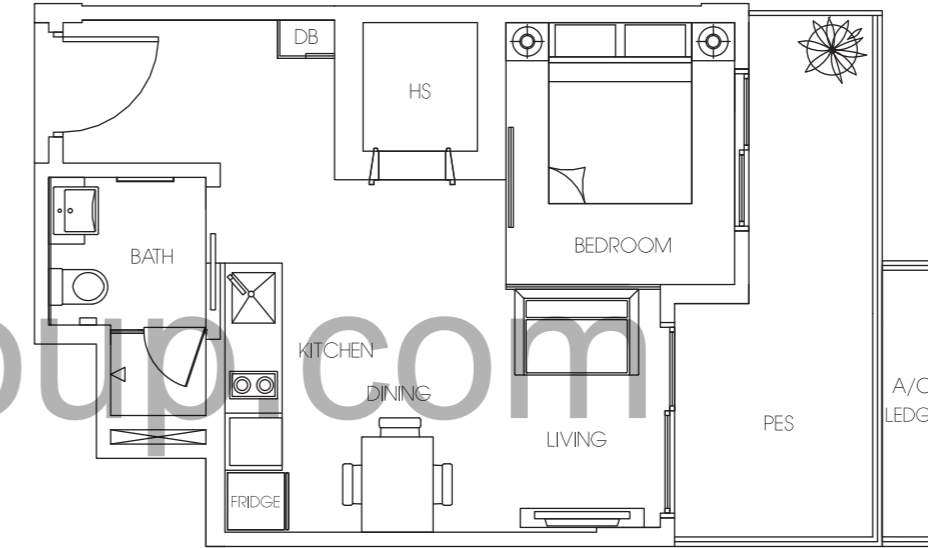
**1 - BEDROOM  
TYPE 1BR-A1 (Typical Unit)**

UNIT #02-04, #02-07\*  
#03-04, #03-07\*  
#04-04, #04-07\*  
AREA 45 sqm



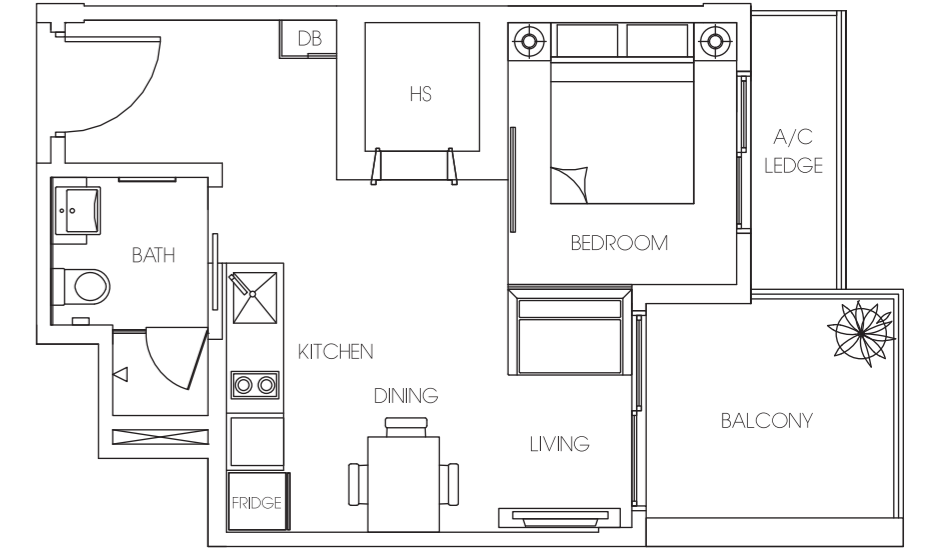
**1 - BEDROOM  
TYPE 1BR-A2 (GFU)**

UNIT #01-05, #01-06\*  
AREA 48 sqm



**1 - BEDROOM  
TYPE 1BR-A2 (Typical Unit)**

UNIT #02-05, #02-06\*  
#03-05, #03-06\*  
#04-05, #04-06\*  
AREA 45 sqm



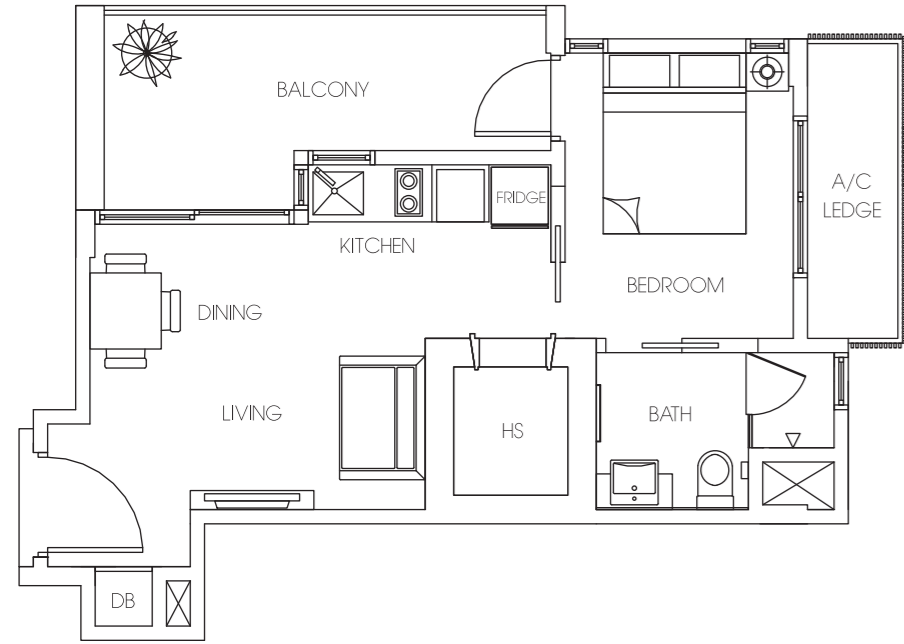
- \* Mirror image  
- Area includes, A/C ledge, balcony, roof terrace, PES and void. Some units are mirror images as shown in the brochure. Please refer to the key plans for orientations.  
All plans are subject to changes as may be approved by the relevant authorities. All floor areas are approximate measurements only and are subject to final survey. Plans are not drawn to scale.  
Abbreviation: A/C (Air-con Ledge), HS (Household Shelter), PES (Private Enclosed Space), DB (Distribution Board), RC (Reinforced Concrete)

- \* Mirror image  
- Area includes, A/C ledge, balcony, roof terrace, PES and void. Some units are mirror images as shown in the brochure. Please refer to the key plans for orientations.  
All plans are subject to changes as may be approved by the relevant authorities. All floor areas are approximate measurements only and are subject to final survey. Plans are not drawn to scale.  
Abbreviation: A/C (Air-con Ledge), HS (Household Shelter), PES (Private Enclosed Space), DB (Distribution Board), RC (Reinforced Concrete)

**1 - BEDROOM  
TYPE 1BR-B (Typical Unit)**

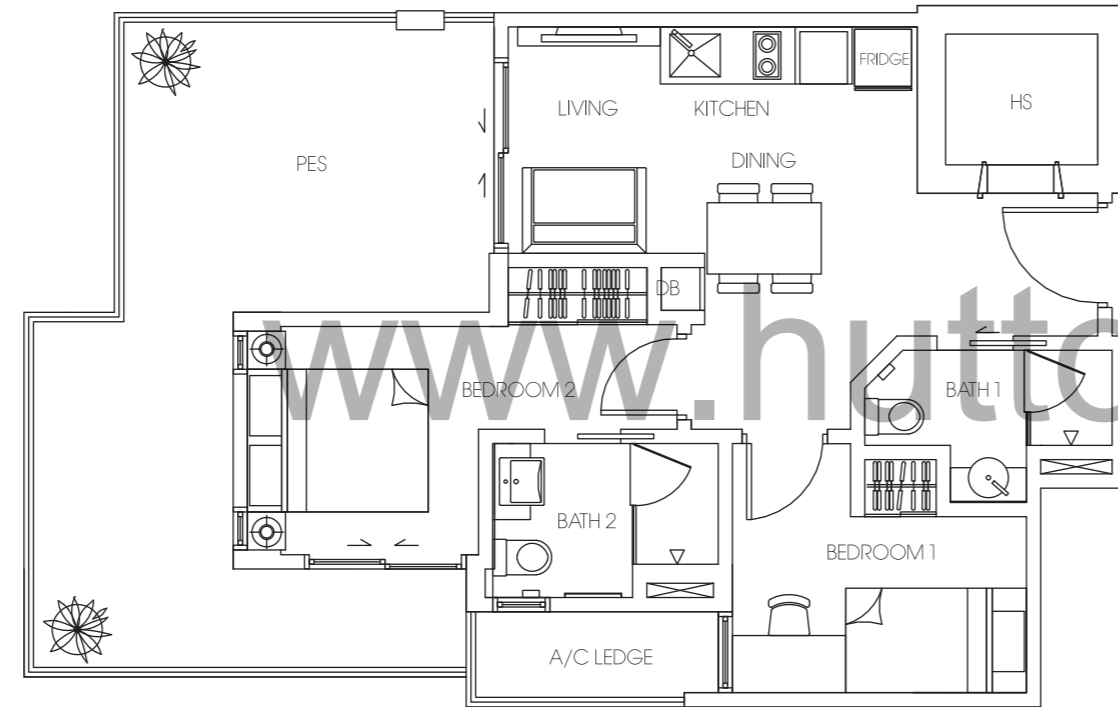
UNIT #02-03, #02-08\*  
#03-03, #03-08\*  
#04-03, #04-08\*

AREA 45 sqm



**2 - BEDROOM  
TYPE 2BR-A1 (GFU)**

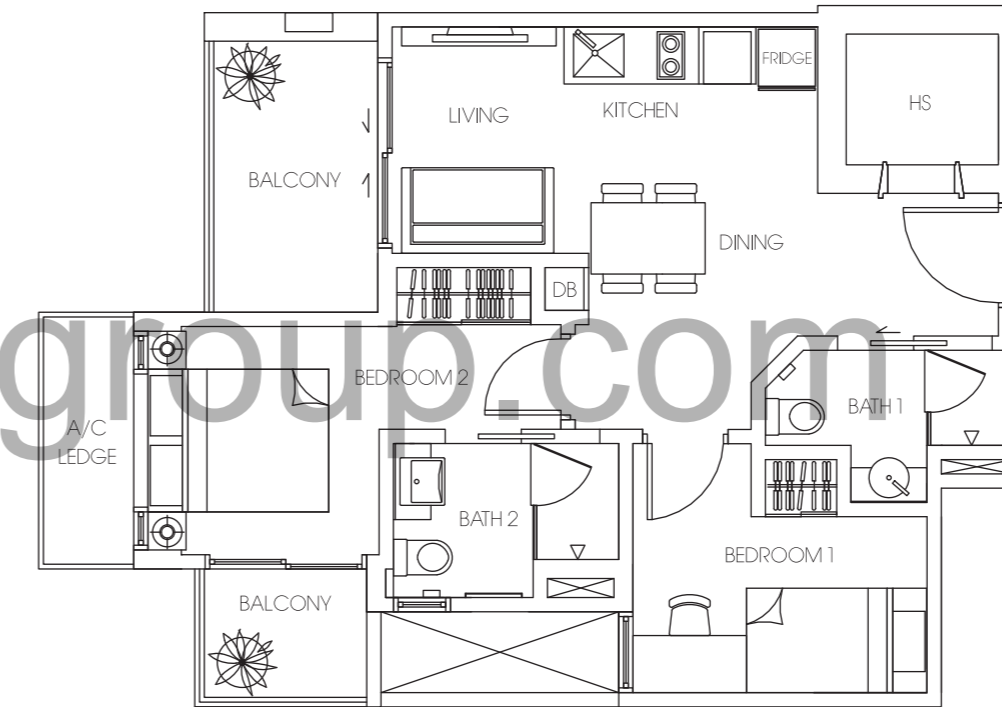
UNIT #01-01  
AREA 76 sqm



**2 - BEDROOM  
TYPE 2BR-A (Typical Unit)**

UNIT #02-01  
#03-01  
#04-01

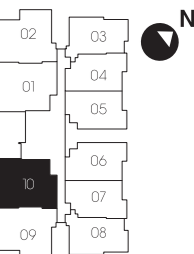
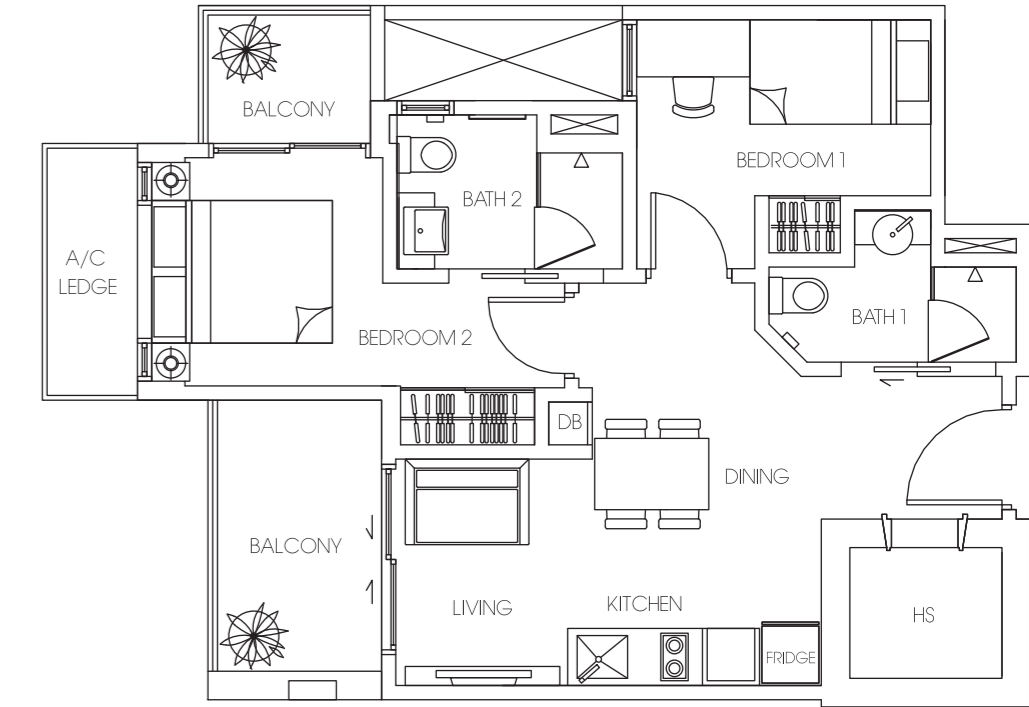
AREA 61 sqm



**2 - BEDROOM  
TYPE 2BR-A (Typical Unit)**

UNIT #02-10  
#03-10  
#04-10

AREA 60 sqm

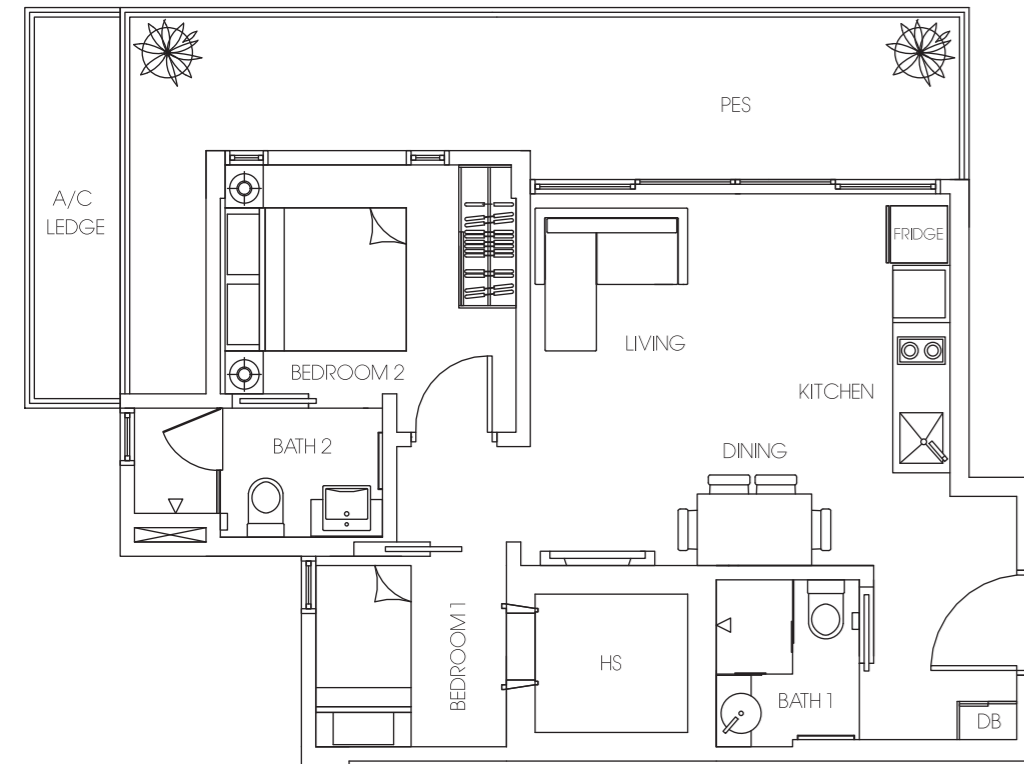


- \* Mirror image  
- Area includes, A/C ledge, balcony, roof terrace, PES and void. Some units are mirror images as shown in the brochure. Please refer to the key plans for orientations.  
All plans are subject to changes as may be approved by the relevant authorities. All floor areas are approximate measurements only and are subject to final survey. Plans are not drawn to scale.  
Abbreviation: A/C (Air-con Ledge), HS (Household Shelter), PES (Private Enclosed Space), DB (Distribution Board), RC (Reinforced Concrete)

- Area includes, A/C ledge, balcony, roof terrace, PES and void. Some units are mirror images as shown in the brochure. Please refer to the key plans for orientations.  
All plans are subject to changes as may be approved by the relevant authorities. All floor areas are approximate measurements only and are subject to final survey. Plans are not drawn to scale.  
Abbreviation: A/C (Air-con Ledge), HS (Household Shelter), PES (Private Enclosed Space), DB (Distribution Board), RC (Reinforced Concrete)

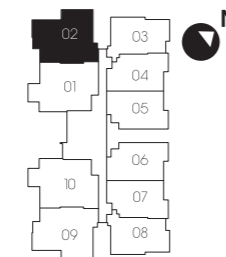
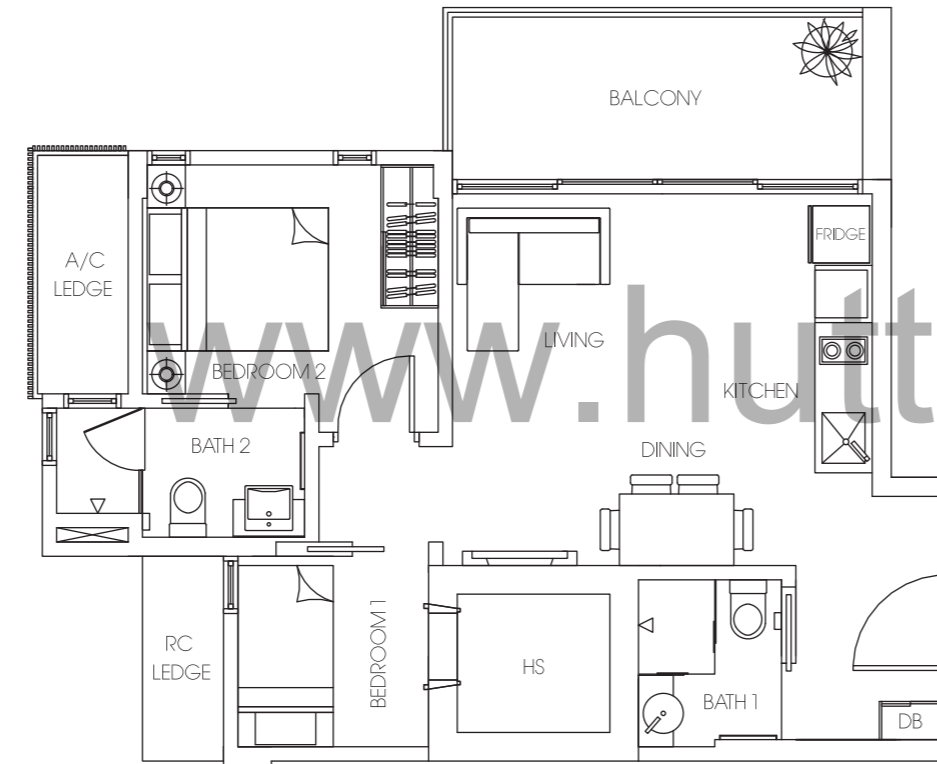
**2 - BEDROOM  
TYPE 2BR-B1 (GFU)**

UNIT #01-02  
AREA 69 sqm



**2 - BEDROOM  
TYPE 2BR-B (Typical Unit)**

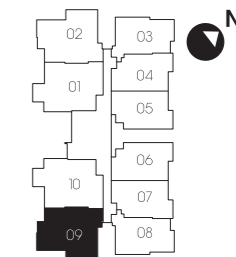
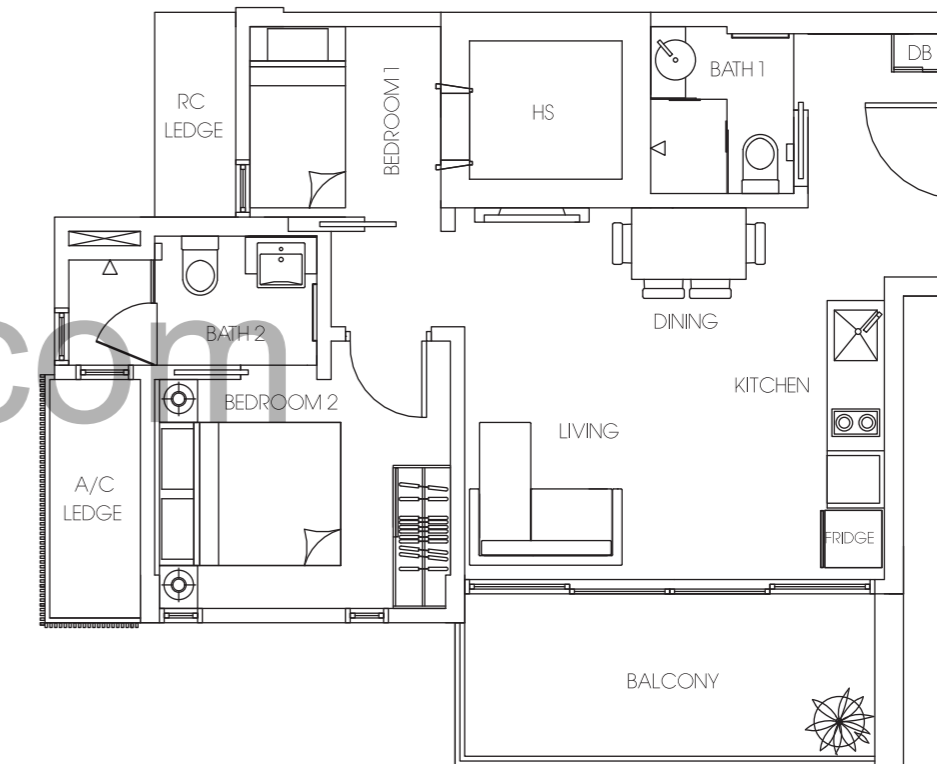
UNIT #02-02  
#03-02  
#04-02  
AREA 60 sqm



- Area includes, A/C ledge, balcony, roof terrace, PES and void. Some units are mirror images as shown in the brochure. Please refer to the key plans for orientations.  
All plans are subject to changes as may be approved by the relevant authorities. All floor areas are approximate measurements only and are subject to final survey. Plans are not drawn to scale.  
Abbreviation: A/C (Air-con Ledge), HS (Household Shelter), PES (Private Enclosed Space), DB (Distribution Board), RC (Reinforced Concrete)

**2 - BEDROOM  
TYPE 2BR-B (Typical Unit)**

UNIT #02-09  
#03-09  
#04-09  
AREA 59 sqm

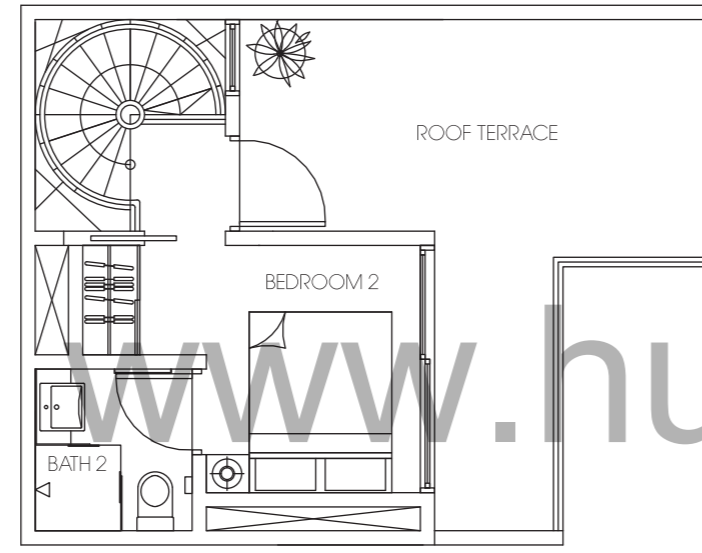
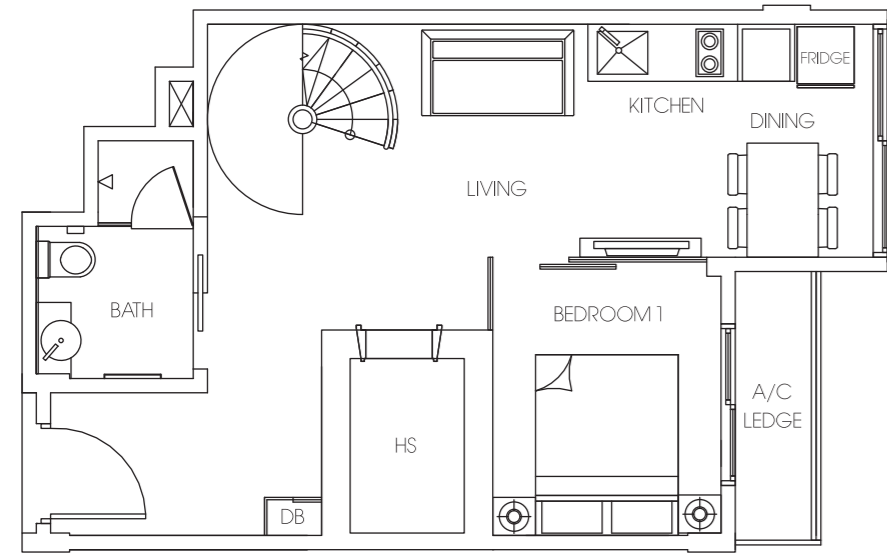


- Area includes, A/C ledge, balcony, roof terrace, PES and void. Some units are mirror images as shown in the brochure. Please refer to the key plans for orientations.  
All plans are subject to changes as may be approved by the relevant authorities. All floor areas are approximate measurements only and are subject to final survey. Plans are not drawn to scale.  
Abbreviation: A/C (Air-con Ledge), HS (Household Shelter), PES (Private Enclosed Space), DB (Distribution Board), RC (Reinforced Concrete)

**2 - BEDROOM PENTHOUSE WITH ATTIC  
TYPE 2BR-C1 (5th+Attic)**

UNIT #05-04, #05-07\*

AREA 87 sqm  
(includes 11 sqm of void area)

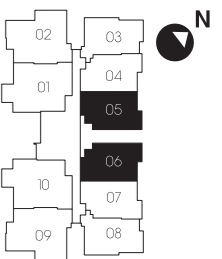
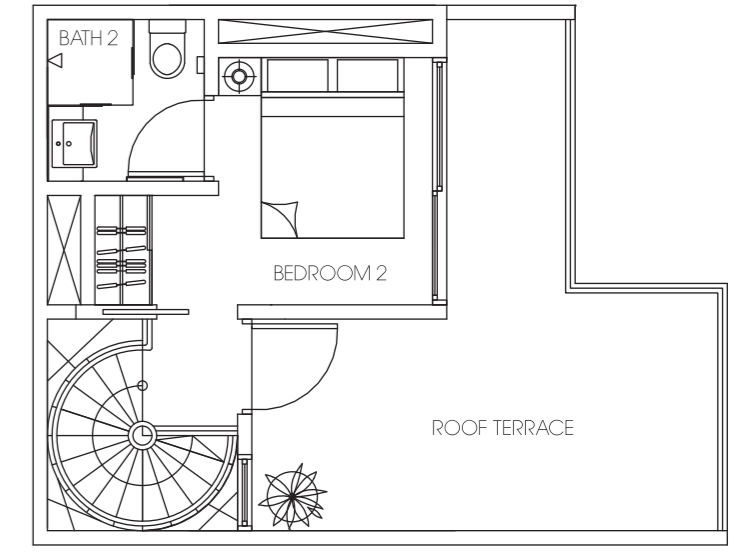
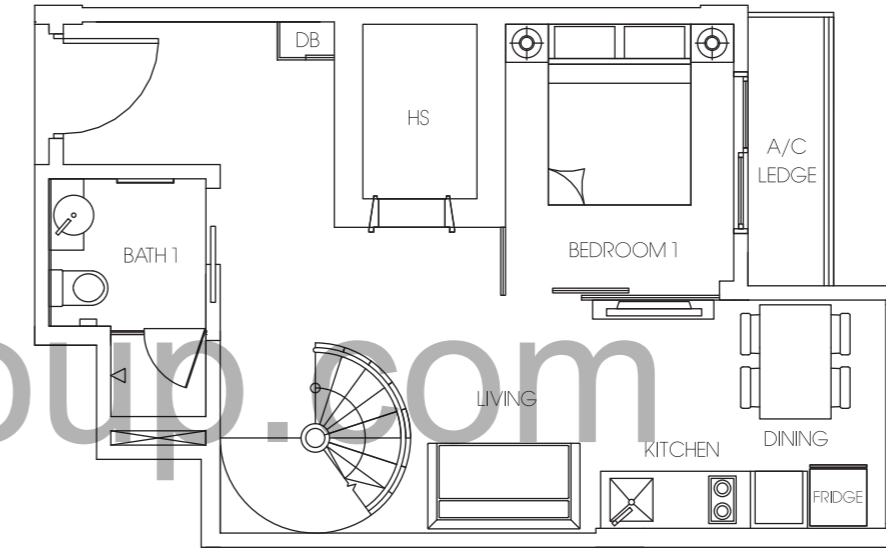


\* Mirror image  
- Area includes, A/C ledge, balcony, roof terrace, PES and void. Some units are mirror images as shown in the brochure. Please refer to the key plans for orientations.  
All plans are subject to changes as may be approved by the relevant authorities. All floor areas are approximate measurements only and are subject to final survey. Plans are not drawn to scale.  
Abbreviation: A/C (Air-con Ledge), HS (Household Shelter), PES (Private Enclosed Space), DB (Distribution Board), RC (Reinforced Concrete)

**2 - BEDROOM PENTHOUSE WITH ATTIC  
TYPE 2BR-C2 (5th+Attic)**

UNIT #05-05, #05-06\*

AREA 87 sqm  
(includes 11 sqm of void area)



\* Mirror image  
- Area includes, A/C ledge, balcony, roof terrace, PES and void. Some units are mirror images as shown in the brochure. Please refer to the key plans for orientations.  
All plans are subject to changes as may be approved by the relevant authorities. All floor areas are approximate measurements only and are subject to final survey. Plans are not drawn to scale.  
Abbreviation: A/C (Air-con Ledge), HS (Household Shelter), PES (Private Enclosed Space), DB (Distribution Board), RC (Reinforced Concrete)



