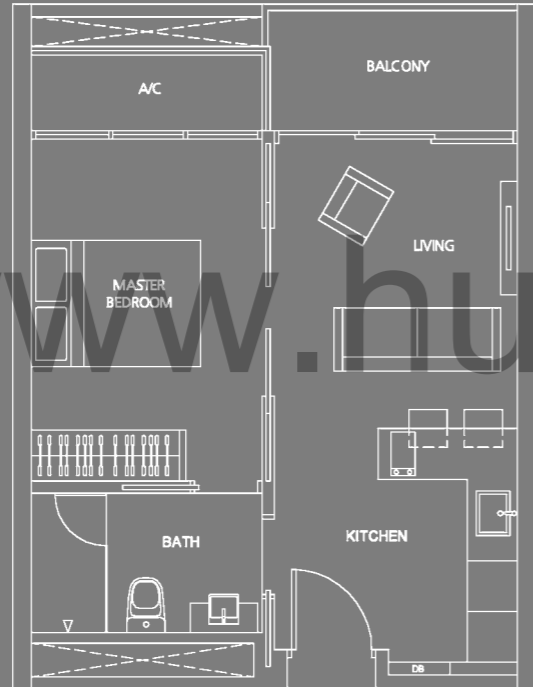


TYPE A

AREA : 45 sqm / 484 sqft

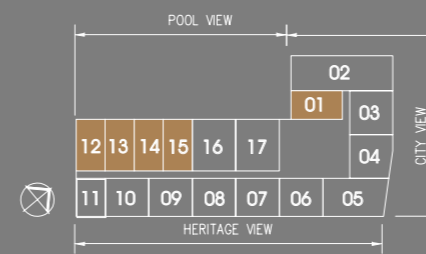
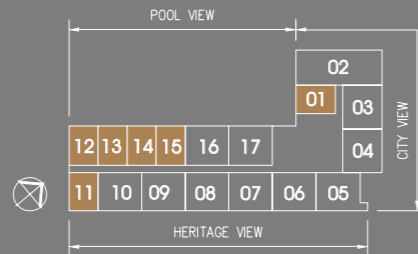
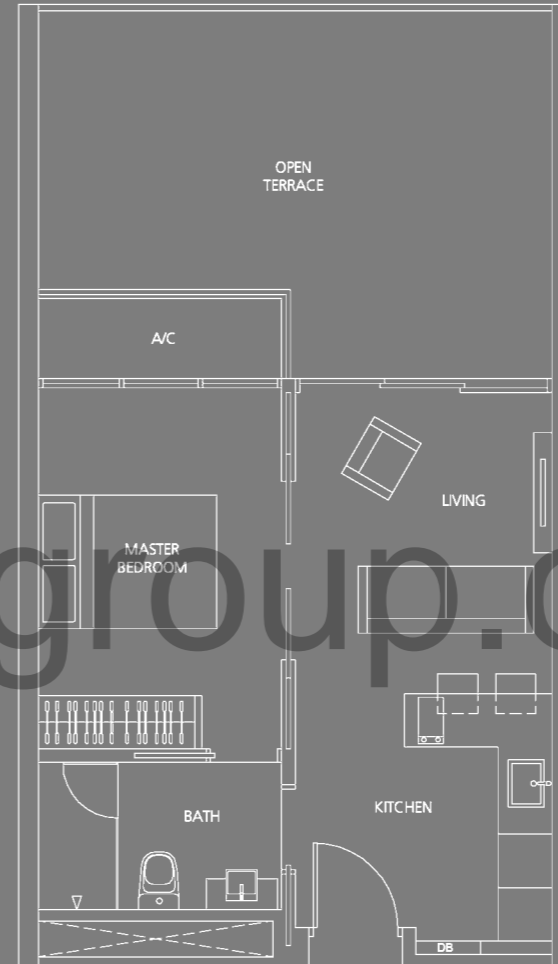
UNIT : #04-01 to #06-01, #04-11 to #06-11,
#04-12 to #06-12, #04-13 to #06-13,
#04-14 to #06-14, #04-15 to #06-15



TYPE A-T1

AREA : 63 sqm / 678 sqft

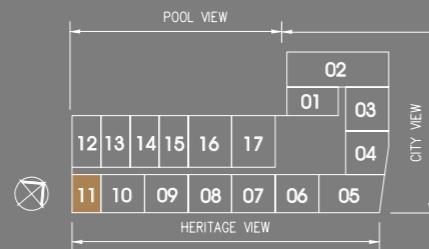
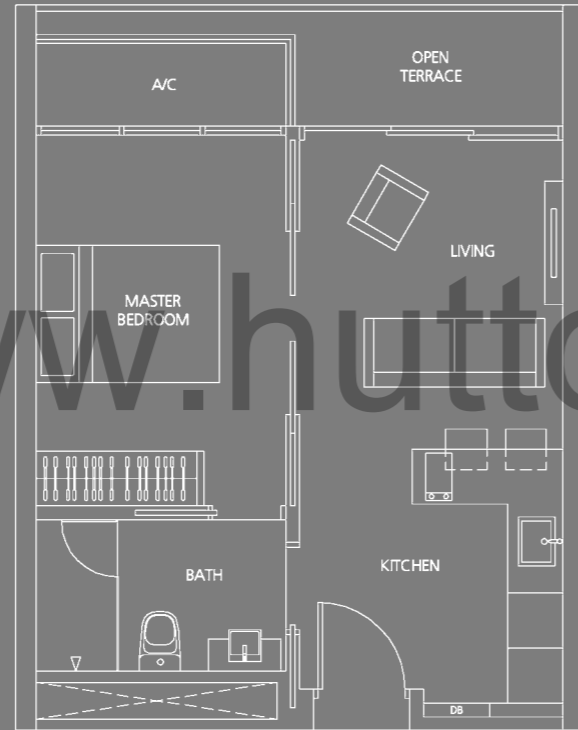
UNIT : #03-01, #03-12, #03-13, #03-14, #03-15



TYPE A-T2

AREA : 46 sqm / 495 sqft

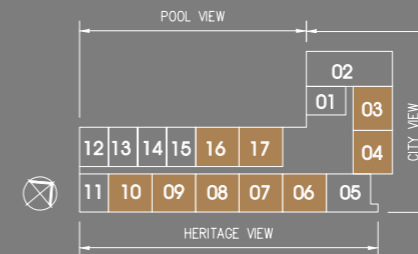
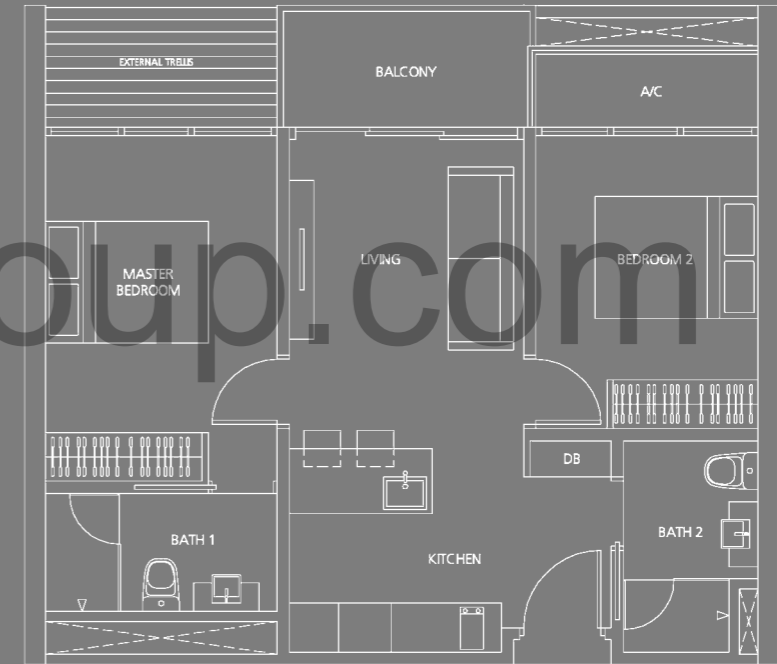
UNIT : #03-11



TYPE B1

AREA : 64 sqm / 689 sqft

UNIT : #04-03 to #06-03, #04-04 to #06-04,
#04-06 to #06-06, #04-07 to #06-07,
#04-08 to #06-08, #04-09 to #06-09,
#04-10 to #06-10, #04-16 to #06-16,
#04-17 to #06-17

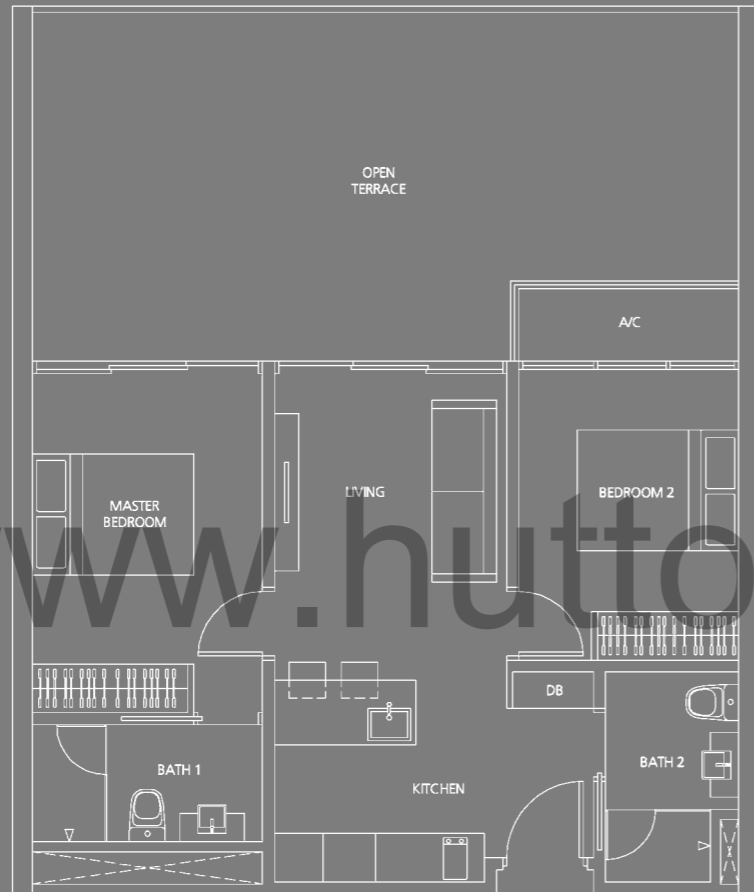


www.huttonsgroup.com

TYPE B1-T1

AREA : 94 sqm / 1012 sqft

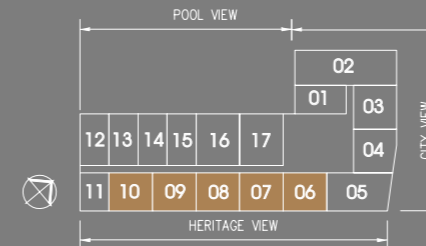
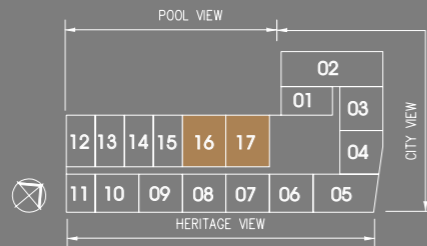
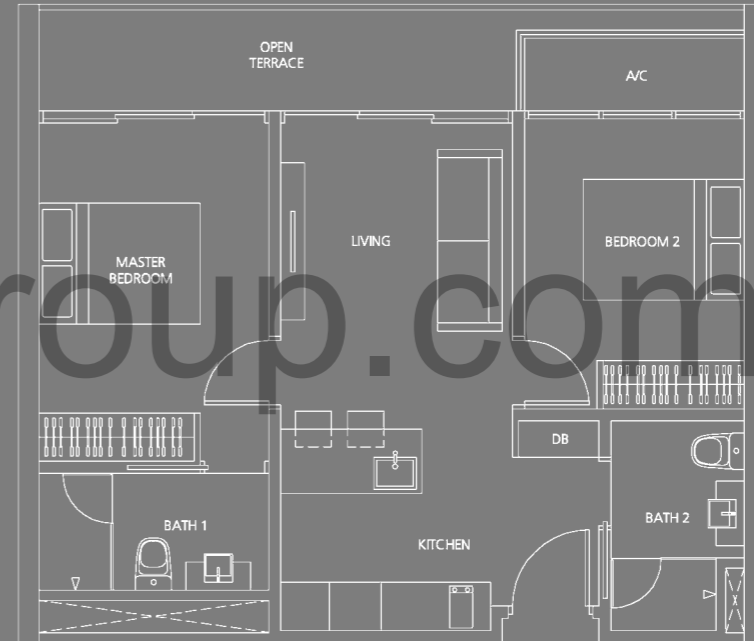
UNIT : #03-16, #03-17



TYPE B1-T2

AREA : 69 sqm / 743 sqft

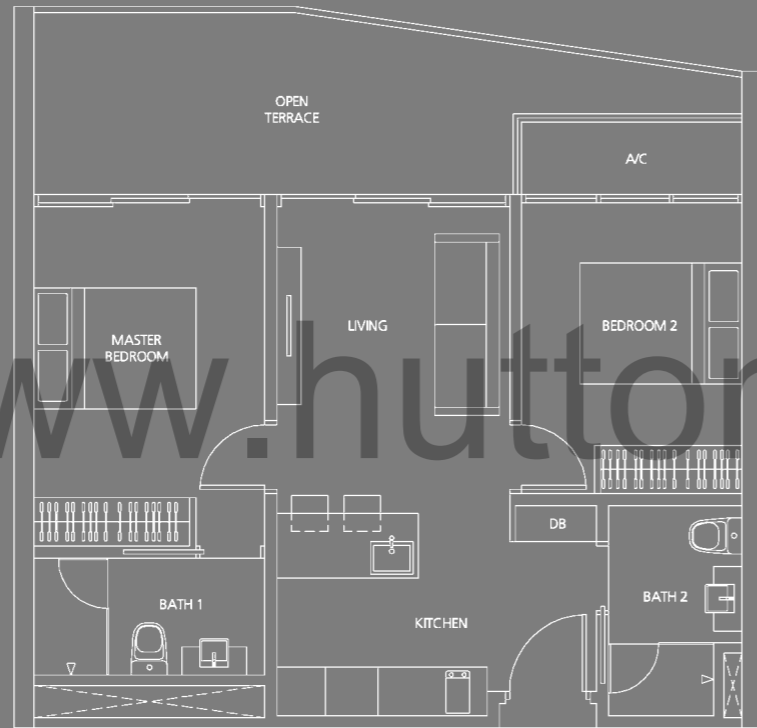
UNIT : #03-06, #03-07, #03-08, #03-09, #03-10



TYPE B1-T3

AREA : 76 sqm / 818 sqft

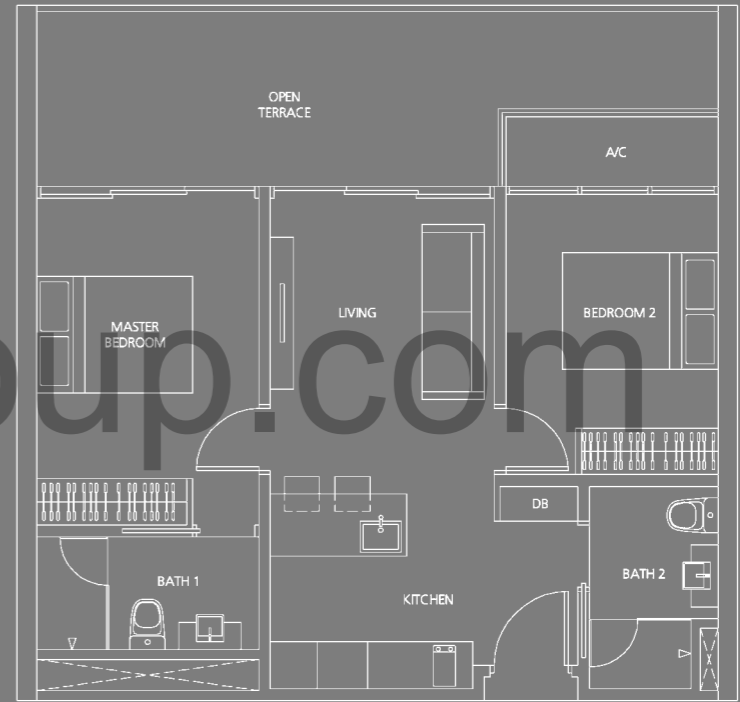
UNIT : #03-04



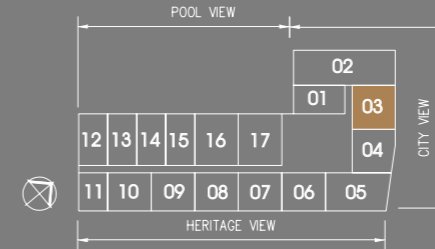
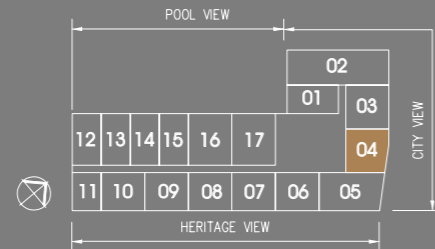
TYPE B1-T4

AREA : 78 sqm / 840 sqft

UNIT : #03-03



www.huttonsgroup.com



TYPE B2

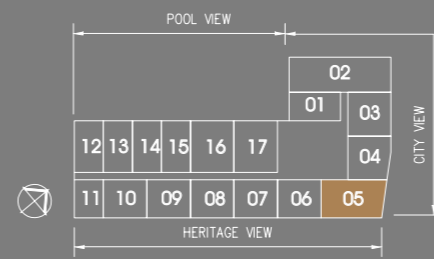
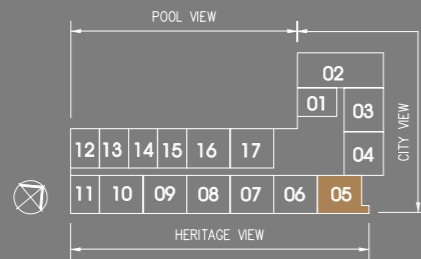
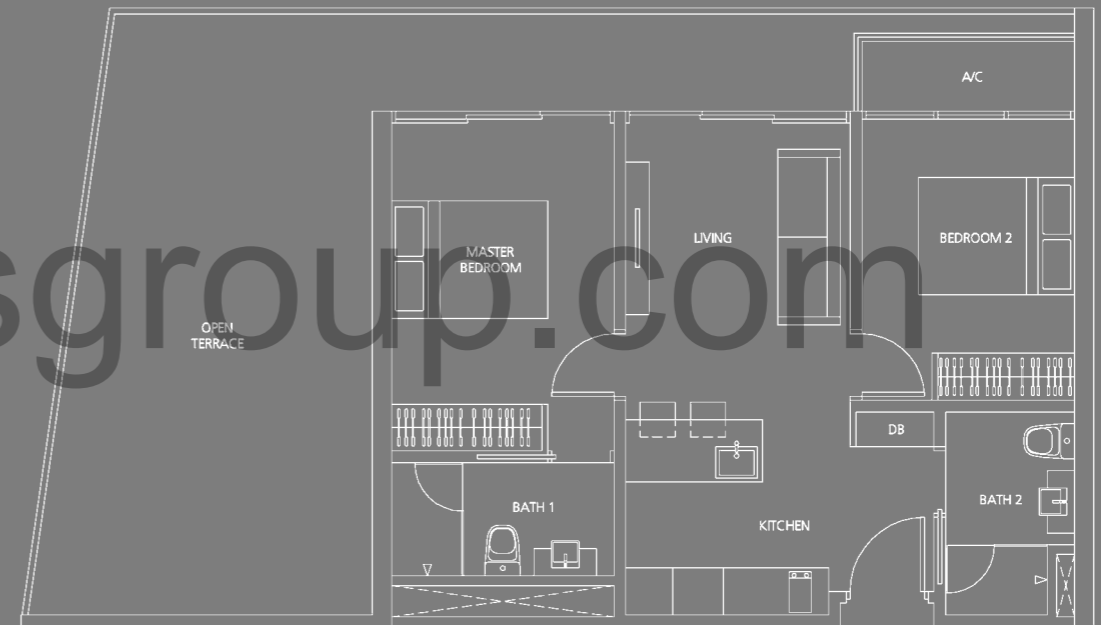
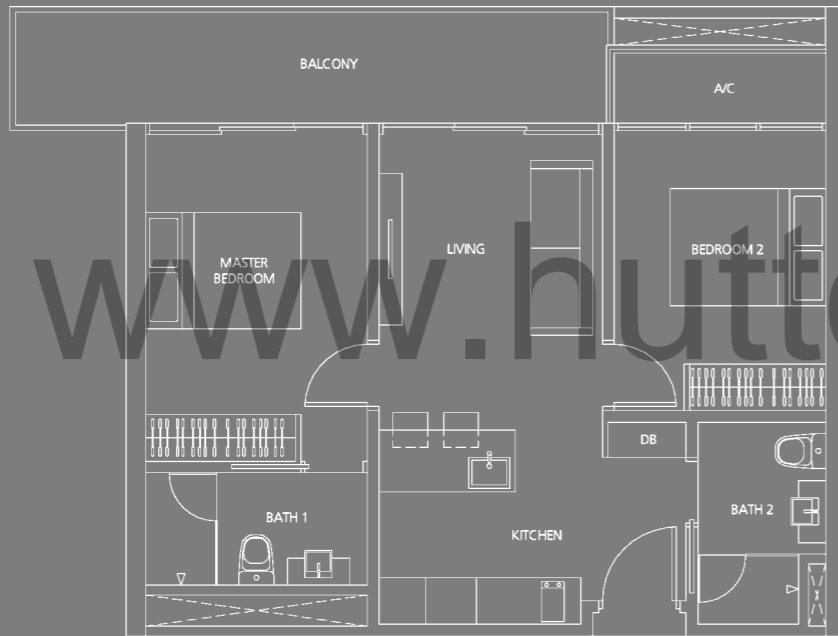
AREA : 71 sqm / 764 sqft

UNIT : #04-05 to #06-05

TYPE B2-T1

AREA : 101 sqm / 1087 sqft

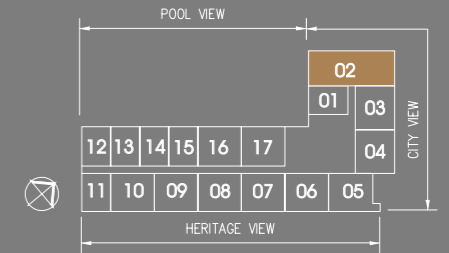
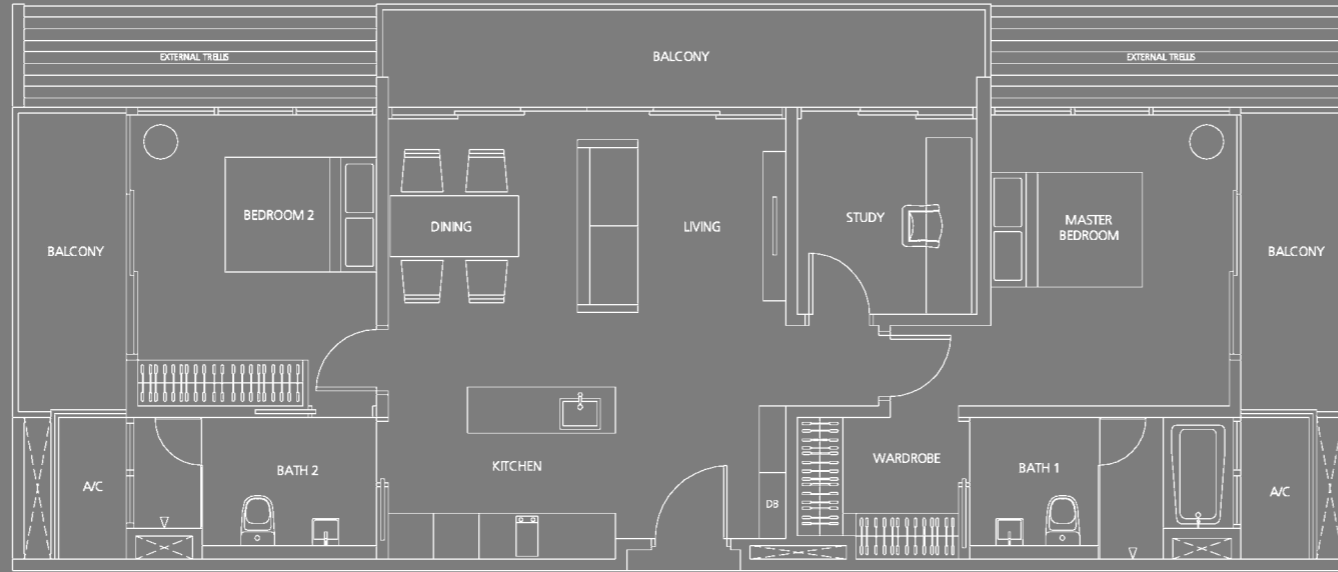
UNIT : #03-05



Floor areas are inclusive of A/C Ledge and/or Balcony and/or Open Terrace and/or Balcony where applicable. All plans are not to scale and subject to amendments as approved by the relevant authorities. Floor areas are approximate measurements and subject to final survey.

TYPE C

AREA : 112 sqm / 1206 sqft
 UNIT : #04-02 to #06-02



www.huttonsgroup.com

TYPE C-T1

AREA : 150 sqm / 1615 sqft
 UNIT : #03-02

